

ECO-FRIENDLY HOUSE

TIMBER
TRANSFORMATION

£500 prize to be won!
Competition time!



WE CAN'T WAIT
TO SEE YOUR
HOUSES



Hi, we are Eddie and Mike, founders of Inverlay Homes and Timber Engineering UK.

We have been building eco-friendly family houses for more than 10 years now and our passion is ensuring that everyone has a safe, warm house to go home to and that they can afford to live in.

In order to ensure our houses are as high quality and sustainable as possible we set up Timber Engineering UK so that we could manufacture the superstructure to our houses, we call this the ULTRAKIT. (A superstructure is the main structure of a house)

We want to share our passion for building houses with you and have an exciting opportunity for classes of S2 and S3 pupils Across Tayside to build their very own eco-Friendly home with the 'WOW Factor' and the chance to win £500 for their school. Whilst it is a full class competition there is no limit to the number of students per class.

Not only is this a great opportunity to learn about designing and building houses, its also a fantastic opportunity to learn about what makes a house eco-friendly and really use your imagination to make your house stand out from the rest.



So what's involved?

Taking part in the competition couldn't be easier.

Stage 1 - 3rd March to 25th April 2025

All Schools across Tayside are invited to take part in building their own Eco-friendly home. Timber Engineering UK will supply all the Kit to build a superstructure and we ask that you use your imagination and get as creative as possible and use the resources around the school to turn it into an eco-friendly house.

[for more information on what makes a house eco-friendly - <https://www.youtube.com/watch?v=PFmq74h8F6w>

To submit your entry we ask that you send us a video presentation showing us your completed house, explaining what makes it eco-friendly and what makes your house the one that we would want to live in.

A winning school from each local authority area will be announced on Wednesday 30th April 2025 and the winners will vouchers for each student and be invited along to the regional final.

A judging panel will score each submission on their house design, their knowledge of what makes the house eco-friendly, their creativity and their video presentation.



So what next?

Stage 2 - 30th April 2025 to Friday 23rd May 2025.

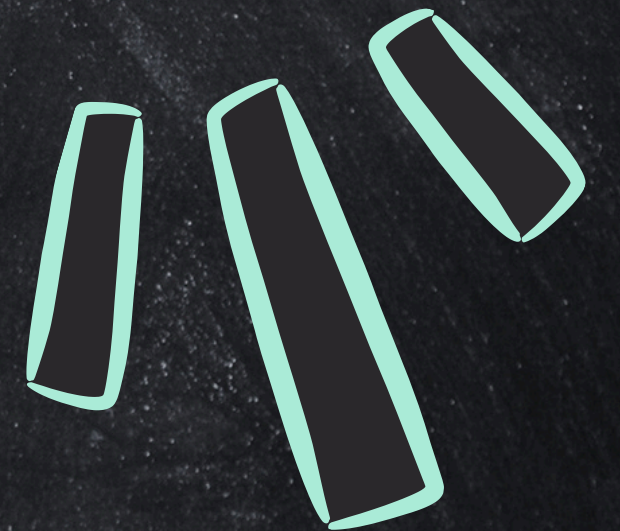
The winning school from each Local authority area will now enter the regional final.

You will have until the Friday 23rd May to add one additional eco-friendly element to your home and you will be invited along to Timber Engineering HQ in Dundee to present in person to the judges.

This presentation will be a follow on from stage 1 and will now include information such as how much you will sell their house for, who your target market will be and more detail about the energy efficiency of your home. We want to know why you chose your clean heat sources, and the impact they will have on your carbon footprint aswell as the benefit for the family living in the home.

Don't worry there will be no costs to the school, DYW will cover the cost of the bus transportation for you to get here and back and we will provide the pizza for lunch.

COMPETITION
OVERVIEW



HOW DO I SIGN UP?

WIN £500 FOR
YOUR SCHOOL

We are looking for all sign ups by FRIDAY 31ST JANUARY 2025.

All we need you to do is confirm your school, local authority area, class size and a contact. Don't forget to pick a really cool team name (you never know, there might be an extra prize for the best name)

We will then arrange for more detailed instructions and your building pack to be delivered to your school in order for you to start building from Monday 3rd March 2025.

The Timber Engineering Team will also be on hand for class visits, top tips and words of encouragement if you need us.

Sign up by emailing:
morganmcleod@dywtaycities.co.uk and caryn@timber-engineering.uk

FOR MORE INFORMATION ON TIMEBER ENGINEERING UK AND OUR ULTRAKIT, CHECK OUT OUR WEBSITE

WWW.TIMBER-ENGINEERING.UK